

# Information for Participants

**62<sup>nd</sup> Session of the IPCC**

**Hangzhou, China  
24 – 28 February 2025**

## I. INTRODUCTION

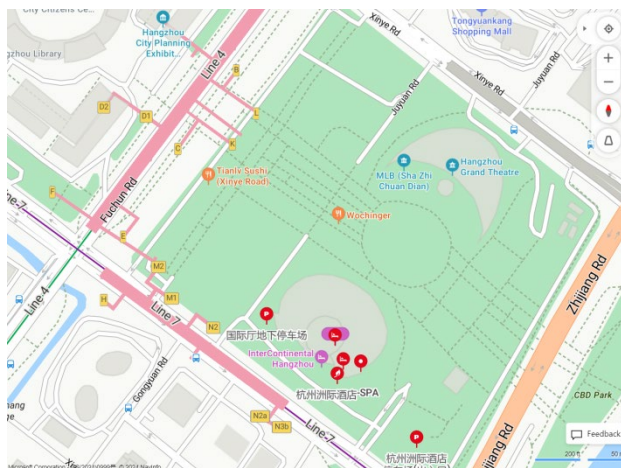
The Sixty Second Session of the Intergovernmental Panel on Climate Change (IPCC) will take place in **Hangzhou, China** from **24 to 28 February 2025**.

China, officially the People's Republic of China (PRC), situated in the eastern part of Asia and boasting a long history spanning over 5,000 years, is a country of immense cultural depth and diversity. China spans the equivalent of five time zones and shares the border with fourteen countries by land. With a land area of nearly 9.6 million square kilometers, it is the third-largest country by total land area. Hangzhou, the capital city of Zhejiang province and its economic, cultural, science and educational center, is one of the central cities in the Yangtze River Delta.

Meeting venue address and details:

### InterContinental Hangzhou

Address: 2 East Jiefang Road (Jiefang Dong Lu), Shangcheng District, Hangzhou, Zhejiang.



More information about the Session can be found at:

<http://www.ipcc.ch/meeting-doc/ipcc-62/>



## **II. REGISTRATION**

The registration of participants to this meeting will be at the venue as follows:

Registration for participants to the Session will be open on site as of Sunday, 23rd February from 14:00 to 17:00, and as of 08:00 from Monday, 24th February to Friday, 28th February 2025.

23rd February: 14:00 – 17:00

24th – 28th February: 08:00 – 16:00

*Please pre-register each designated participant no later than Tuesday, **11 February 2025 (midnight CST)** at the following website: <https://apps.ipcc.ch/register>, using the unique credentials sent to all Focal Points in advance of the session. Please upload a photo for each registered participant in the format specified.*

## **III. VISITORS TO HANGZHOU, CHINA**

### **1. INTERNATIONAL AIRPORT**

Participants are recommended to arrive at Hangzhou Xiaoshan International Airport (IATA: HGH, ICAO: ZSHC). The airport serves Hangzhou, a major city in the Yangtze River Delta region and the capital of East China's Zhejiang province. The airport is located 27 km east of downtown area of Hangzhou. The airport currently serves in excess of 35 million passengers and ranks tenth in terms of passenger traffic in China.

### **2. TRANSPORTATION**

Participants will be responsible for coordinating their own transportation to and from the airport. Xiaoshan International Airport station of the Hangzhou metro allows passengers to commute between the airport and the city.

#### **TRANSPORT FROM/TO XIAOSHAN INTERNATIONAL AIRPORT**

##### **METRO**

Xiaoshan International airport is a metro station on Lines 1, 7 and 19 of the Hangzhou metro. It is located near Terminal 3 of the international airport. The line provides connections to the city center and takes approximately 30 minutes.

Hangzhou metro map is available [here](#).

##### **CAR/TAXI**

The distance from the airport to the venue is about 26 km and takes approximately 35 minutes (depending on the traffic). Taxis are available outside the arrivals of the terminals.

### **3. TIME ZONE**

China spans the equivalent of five time zones.

Hangzhou is UTC +0800 hours.

### **4. VISAS FOR TRAVEL TO CHINA**

A valid entry visa is required for most nationals and needs to be obtained in advance.

List of agreements on mutual visa exemption between the People's Republic of China and foreign countries can be checked [here](#).

As of November 30, China has expanded its unilateral visa-free policy to 38 countries. Nationals of 38 countries including Brunei, France, Germany, Italy, Spain, Holland, Malaysia, Switzerland, Ireland, Hungary, Austria, Belgium, Luxembourg, New Zealand, Australia, Poland, Portugal, Greece, Cyprus, Slovenia, Slovakia, Norway, Finland, Denmark, Iceland, Andorra, Monaco, Liechtenstein, Korea, Bulgaria, Romania, Croatia, Montenegro, North Macedonia, Malta, Estonia, Latvia, Japan holding valid ordinary passports can be exempted from visa requirement if entering into China for the purpose of business, tourism, family or friends visits, exchange and transit. They can stay in China for no more than 30 days without visa.

Please follow the link for detailed information on required travel documents, visa issue and application forms:

[https://cova.mfa.gov.cn/qzCoCommonController.do?show&pageId=index&locale=en\\_US](https://cova.mfa.gov.cn/qzCoCommonController.do?show&pageId=index&locale=en_US)

Delegates from member countries and IPCC observer organizations requiring invitation letter from the organizer to apply for the visa are requested to submit:

1. filled information form available from the P62 website
2. scanned copy of the passports
3. official IPCC-62 nomination letter

**of the entire delegation** to Ms. Han Guolin at the Department of International Cooperation of China Meteorological Administration via email <[intcma@163.com](mailto:intcma@163.com)> and cc [liyt@cma.gov.cn](mailto:liyt@cma.gov.cn).

It is recommended to take documents such as invitation letters, air tickets and reservations of accommodation with you when you travel to China.

It is the delegate's own responsibility to obtain a visa for China. The information provided herein acts only as guidance. A list of Chinese diplomatic and consular missions abroad is also listed on the website above.

*For any urgent visa related matters or specific questions, please contact <Ms HAN Guolin> at <+86 10 68406662> every working day between 9:00 to 17:00 or via email at <[intcma@163.com](mailto:intcma@163.com) and [liyt@cma.gov.cn](mailto:liyt@cma.gov.cn)>*

## **5.** HEALTH REQUIREMENTS

Up-to-date information on international travel and health requirements is provided by the World Health Organization (WHO) at the following websites:

- <https://www.who.int/travel-advice>
- <https://www.who.int/emergencies/diseases/novel-coronavirus-2019>

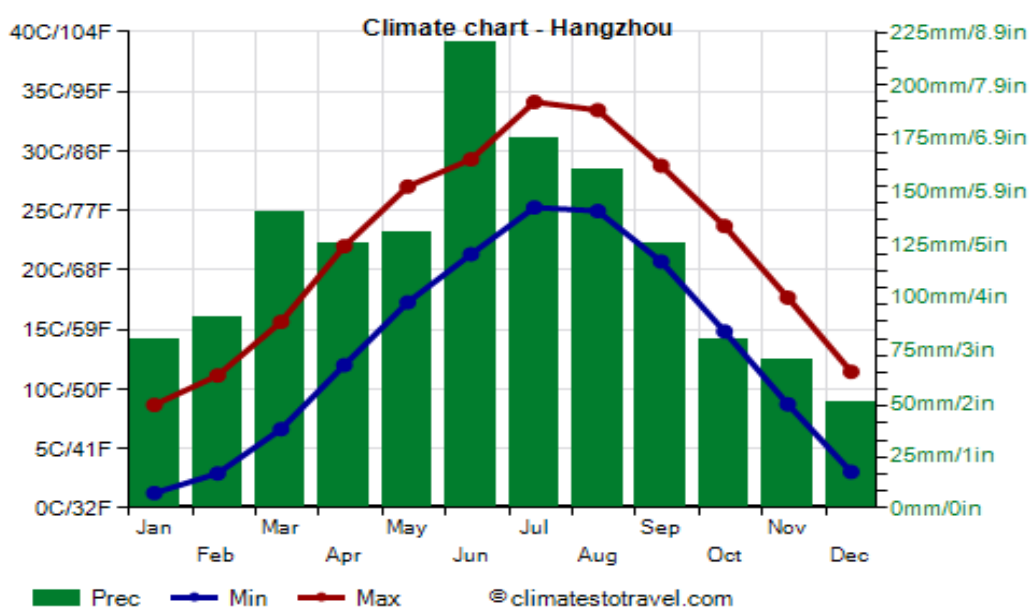
There are no longer COVID restrictions on entering China from abroad.

Please note that WMO/IPCC shall not be held responsible for any health problems or accidents that the participants may have. Participants are responsible for making all necessary arrangements for life, health and other forms of insurance as they consider appropriate.

## 6. WEATHER

Because of its vast geographical area, China has a wide variety of climate types.

The climate in Hangzhou is temperate, with relatively cold winters and hot and rainy summers. Winter, in Hangzhou, is from December to February. The average temperature in February can range from 3°C to 11°C with an average of 12 days of precipitation.



## 7. CURRENCY

The currency in China is the Renminbi (symbol: ¥). It is also known as the Chinese Yuan.

The yuan is the basic unit of the renminbi. One yuan is divided into 10 jiao, and the jiao is further subdivided into 10 fen. The word yuan is widely used to refer to the Chinese currency generally, especially in international contexts.

The current exchange rates are:

1 USD = ¥ 7.25

1 EUR = ¥ 7.62

Please note that these rates can vary with time and with the agent exchanging currency. Please check [www.xe.com](http://www.xe.com) for the most up-to-date exchange rates.

Foreign currency can be changed at banks and the airport. Banks in Hangzhou are open from 09:00 to 17:00 Monday to Friday.

### Mobile payment (recommended)

Mobile payment is popular in China, please check [Guide to Payment in China](#)

### ATMs

ATMS are available with 24-hour access.

### **Credit cards**

Major international cards are accepted.

### **Tipping**

Tipping in China is not expected or required.

## **8. ELECTRICITY**



Power systems are 220 volts and 50 Hz.

Participants are advised to bring their own plug adapters to plug into power sockets. The type of plugs and sockets found in China are [type A](#) (without holes in blades and slightly shorter blades).

## **9. HOTEL ACCOMMODATIONS**

Participants are responsible for making their own hotel arrangements.

Hangzhou offers a wide provision of accommodation, from international hotel chains to local hotels. You will have to make reservations and pay for the room directly.

The list of recommended hotels with special rates can be found in a separate document [here](#).

## **10. INTERNET SERVICES**

Free Wi-Fi facility will be available at the venue and meeting rooms. You will be given details of the wireless network connection when you register on-site.

## **11. WORKING LANGUAGES**

The national language and character are Mandarin and standardized Chinese characters.

During the session, simultaneous interpretation in the six UN official languages (Arabic, Chinese, English, French, Russian and Spanish) will be provided in the main conference room.

## **12. USEFUL LINK/S FROM THE HOSTS**

- [http://cs.mfa.gov.cn/wgrlh/lhqz/lhqzjjs/202412/t20241231\\_11524381.shtml](http://cs.mfa.gov.cn/wgrlh/lhqz/lhqzjjs/202412/t20241231_11524381.shtml)
- [https://www.mfa.gov.cn/wjbzfwfpt/kzx/tzqg/202411/t20241130\\_11535783.html](https://www.mfa.gov.cn/wjbzfwfpt/kzx/tzqg/202411/t20241130_11535783.html)

## **13. EMERGENCY NUMBERS**

Police	110
Fire Alarm	119

